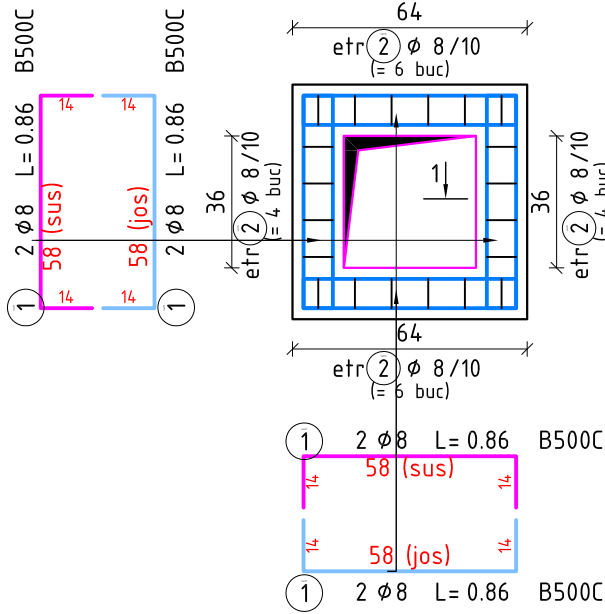


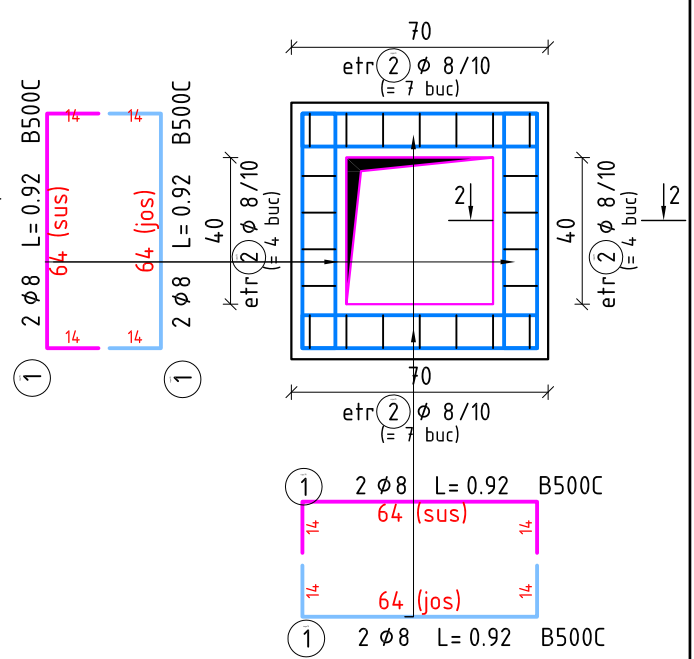
## Plan armare placa 64x64cm

Scara 1:20



## Plan armare placa 70x70cm

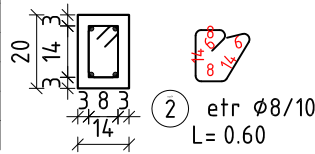
Scara 1:20



CAPAC 64x64cm				B500C
Marca	φ	Nr. buc.	L (m)	8
1	8	16	0.86	13.76
2	8	20	0.60	12
Lungimi pe diametre (m)				25.76
Greutate pe 1m (kg)				0.395
Greutate pe diametre (kg)				15
Total (kg)				B500C=15

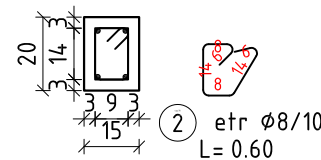
### Sectiunea 1-1

Scara 1:20



### Sectiunea 2-2

Scara 1:20



CAPAC 70x70cm				B500C
Marca	φ	Nr. buc.	L (m)	8
1	8	16	0.92	14.72
2	8	22	0.60	13.2
Lungimi pe diametre (m)				27.92
Greutate pe 1m (kg)				0.395
Greutate pe diametre (kg)				15
Total (kg)				B500C=15



TIP ELEMENT / ELEMENT TYPE	CLASA BETON / CONCRETE CLASS	CLASA DE EXPUNERE / EXPOSURE CLASS	CONTINUTUL DE CLORURI / CHLORIDE CLASS	RAPORTUL MAX. A/C MAXIMUM RATIO W/C	TIPUL DE CEMENT / CEMENT TYPE	CANTITATEA DE CEMENT / CEMENT QUANTITY	DIMENSIUNEA AGREGATELOR / DIMENSION OF THE AGGREGATE
TOATE ELEMENTELE / ALL ELEMENTS	C25/30	XC2	XA1	Cl 0.2	0.6	CEMI 42.5R	300
						kg/mc	mm

CARACTERISTICI OTEL						
ELEMENT	STANDARD	REZ DE CURGERE CARACTERISTICA (R <sub>s,c2</sub> ) [N/mm <sup>2</sup> ]	REZ. RUPERE (R <sub>yk</sub> ) [N/mm <sup>2</sup> ]	ALUNGIRE CAPAT PALLER CURGERE (ε <sub>yk</sub> )	ALUNGIRE MINIMA LA EFFORT MAXIM (ε <sub>yk</sub> )	ALUNGIRE MINIMA LA RUPERE (A <sub>500k</sub> )
<b>ARMATURA</b>						
OB37	STAS 438-1/89	256 Ø<math>12\text{mm}</math> 235 Ø<math>40\text{mm}</math> 355 Ø<math>14\text{mm}</math>	380	2.5%	15.0%	26%
PC52	STAS 438-1/89	345 Ø<math>28\text{mm}</math> 335 Ø<math>40\text{mm}</math>	510	1.5%	10.0%	20%
PO80	STAS 438-1/89	420 Ø<math>12\text{mm}</math> 405 Ø<math>28\text{mm}</math> 395 Ø<math>40\text{mm}</math>	590	1.0%	5.0%	16%
STNB	SR 438-3/98	490 Ø<math>4.0\text{mm}</math> 440 Ø<math>5.6\text{mm}</math> 440 Ø<math>7.1\text{mm}</math> 350 Ø<math>10.0\text{mm}</math>	590 Ø<math>4.0\text{mm}</math> 540 Ø<math>5.6\text{mm}</math> 540 Ø<math>7.1\text{mm}</math> 490 Ø<math>10.0\text{mm}</math>	0.2% Ø<math>4.0\text{mm}</math> 0.3% Ø<math>5.6\text{mm}</math> 0.4% Ø<math>7.1\text{mm}</math> 0.4% Ø<math>10.0\text{mm}</math>	6.0% Ø<math>4.0\text{mm}</math> 7.0% Ø<math>5.6\text{mm}</math> 8.0% Ø<math>7.1\text{mm}</math> 8.0% Ø<math>10.0\text{mm}</math>	6.0% Ø<math>4.0\text{mm}</math> 7.0% Ø<math>5.6\text{mm}</math> 8.0% Ø<math>7.1\text{mm}</math> 8.0% Ø<math>10.0\text{mm}</math>
SPPB	SR 438-3/98 SR 438-4/98	460	510	0.4%	8.0%	8%
BST500 SB (g=ductilitate medie)	DIN 488	500	590	1.0%	5.0%	15%
BST500 SA (g=ductilitate mica)	DIN 488	500	590	0.5%	2.5%	10%

Nota:

Hidroizolatia se va realiza pe exteriorul bazinului.

Intre panourile elementelor chesonului nu se vor introduce elemente de rost.

PROIECTANT GENERAL / GENERAL DESIGNER: SC DCTS STRUCTURI SRL			BENEFICIAR / BENEFICIARY:			PROIECT NR.: PROJECT NO.: 3101/2017			
 DCTS Structuri SRL Nr. Reg. Com: J40/357/17.01.2011, R: 27905206 Strada Duzilor nr. 5   Sector 2   Bucuresti   Romania T (office) +40 314 250 833   T (mobile) +40 721 308 407   F +40 314 250 833   www.dcts.ro			 DUMAR CONSTRUCT SRL Nr. Reg. Com: J40/28779/1994, R: 6904682 Str. Izv. Muresului, nr.11, Bl. A11, Ap. 109, sector 4, Bucuresti, Tel./Fax: +40 460 44 77			FAZA / PHASE: DE			
SPECIFICATIE / SPECIFICATION:		NUME / NAME:		SEMNATURA / SIGNATURE:		SCARA / SCALE:		DENUMIRE PROIECT / PROJECT NAME:	
SEF PROIECT / PRJ. MANAGER		ing. ANA-MARIA POPA				1:20		ANSAMBLU GURA DE SCURGERE	
PROIECTANT / DESIGNER		ing. STEFAN MADALIN BLIDEA						PLANSA NR.: PLAN NO.: Rp02	
DESENAT / DRAWN		ing. STEFAN MADALIN BLIDEA						REVISIA NR.: REVISION NO.:	
VERIFICAT / CHECKED		ing. ALIN APOSTOLESCU				02/2017		PLAN ARMARE PLACA ACOPERIRE GURA DE SCURGERE 00	

COPYRIGHT © by DCTS Structuri SRL. All Rights Reserved.

Nici o parte din acest document nu poate fi copiată, modificată sau multiplicată fără acordul scris al DCTS Structuri SRL. Orice modificare a acestui document fără acordul scris al DCTS Structuri SRL îl va anula în mod automat. No part of this document may be reproduced, modified or multiplied w/o the prior written permission of DCTS Structuri. Any modifications to this document w/o the written permission of DCTS Structuri shall render it invalid & unusable.

210mm x 297mm