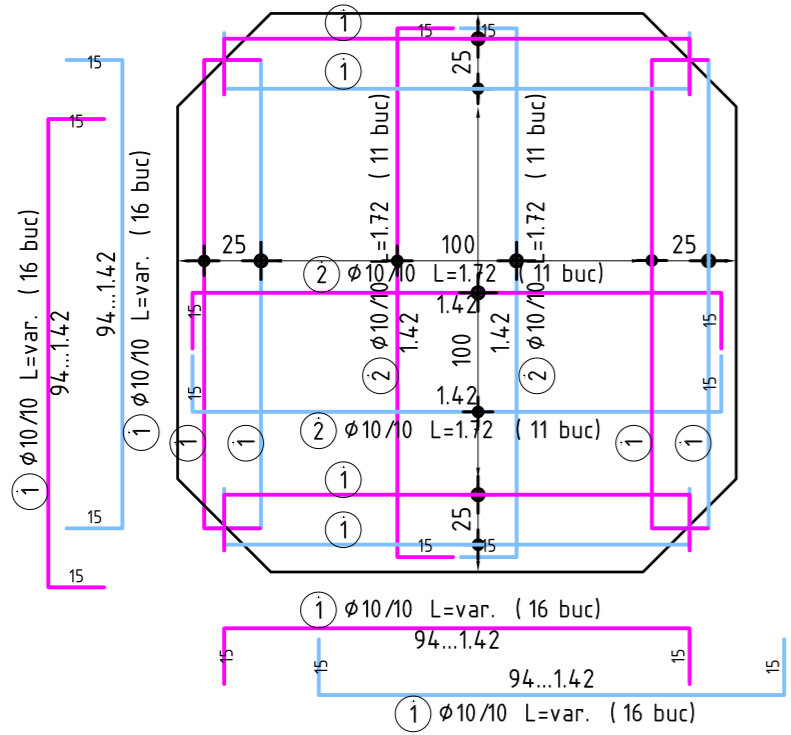
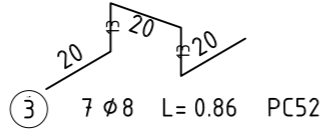


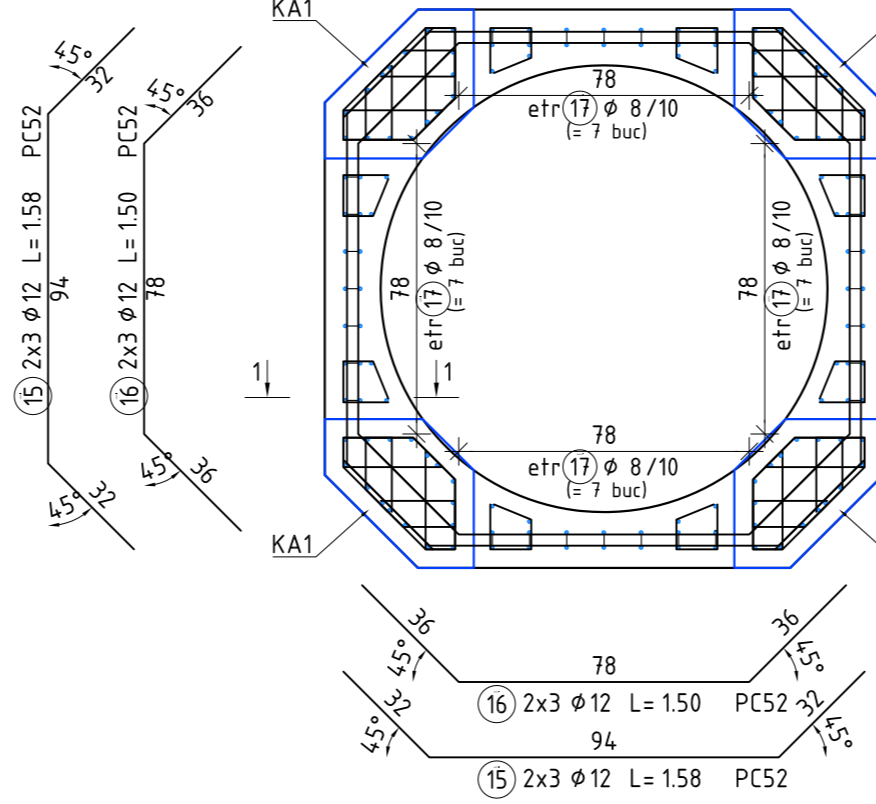
Plan armare radier
Scala 1:20



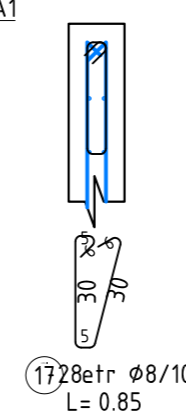
Detaliu capra radier
Scala 1:20



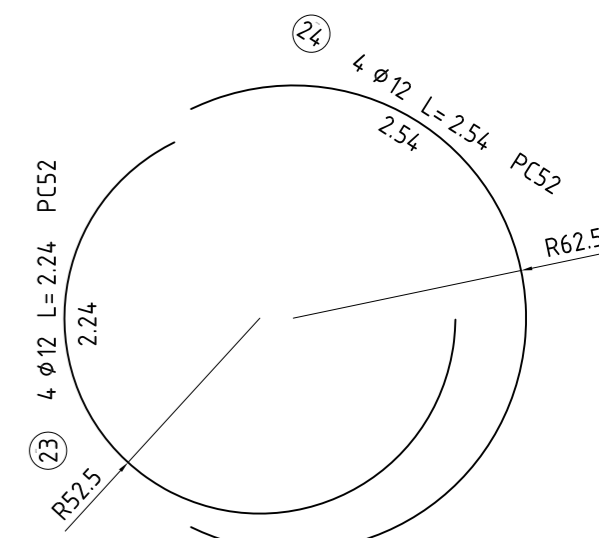
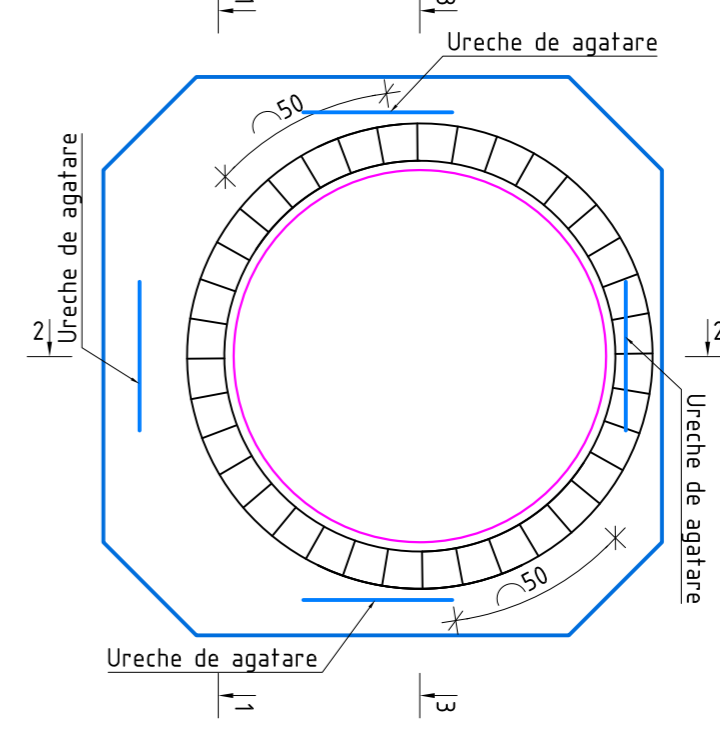
Plan armare centuri baza camin
Scala 1:20



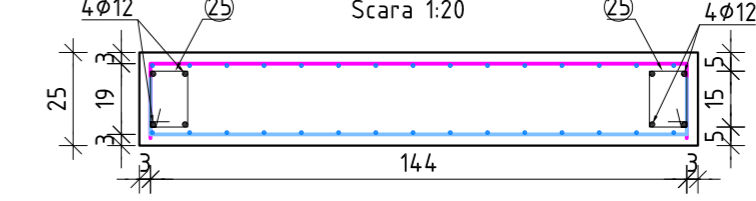
Sectioni 1-1
Scala 1:20



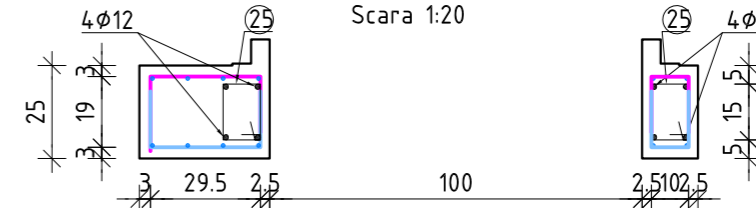
Plan armare bordaj gol placa acoperire
Scala 1:20



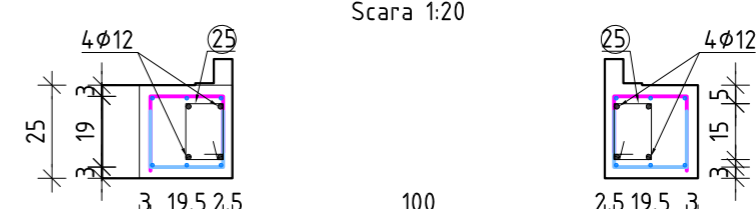
Sectioni 1-1
Scala 1:20



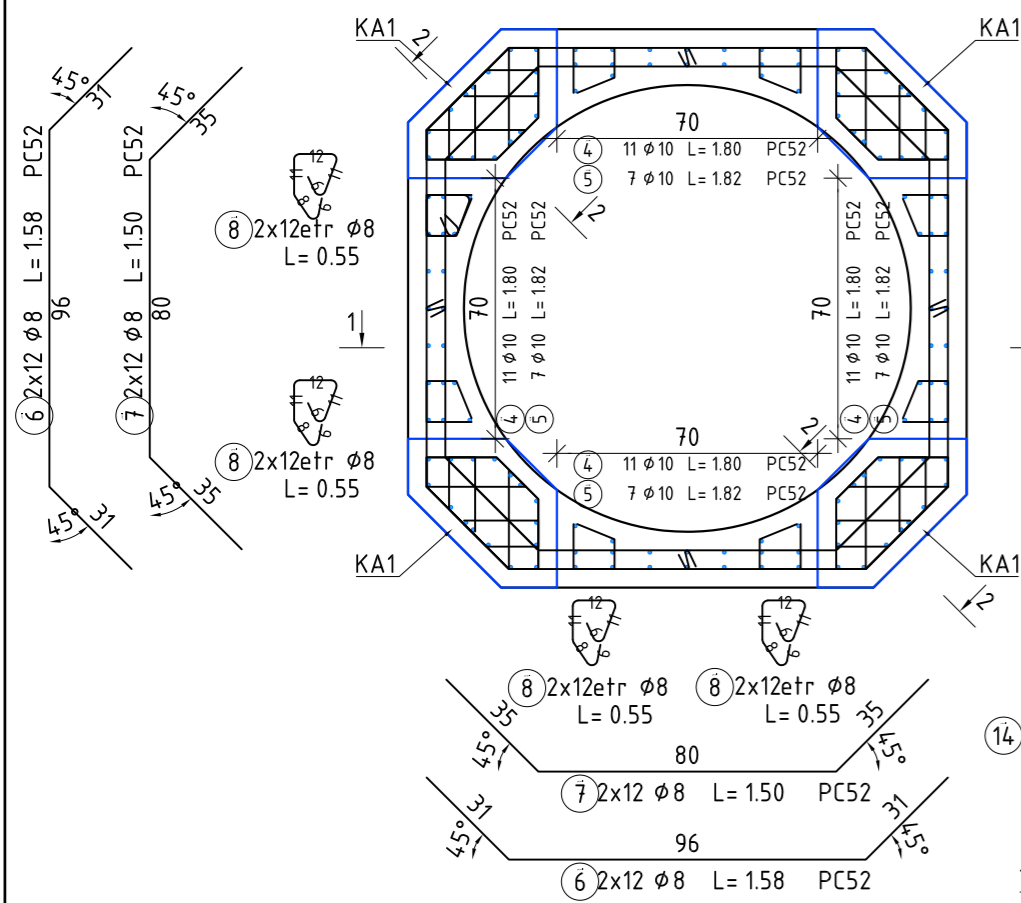
Sectioni 2-2
Scala 1:20



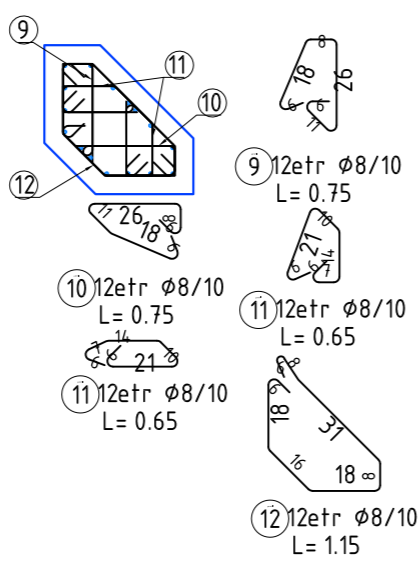
Sectioni 3-3
Scala 1:20



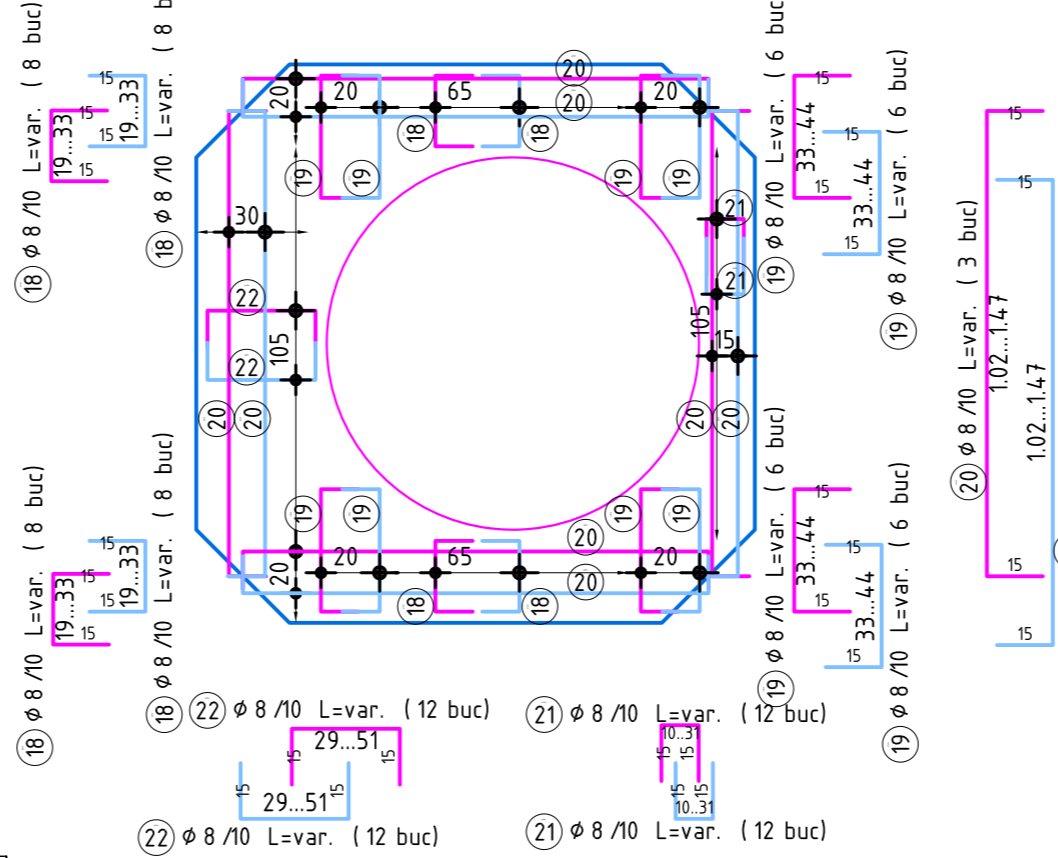
Plan armare pereti baza camin
Scala 1:20



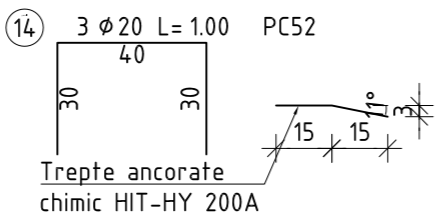
Carcasa KA1 (4buc)
Scala 1:20



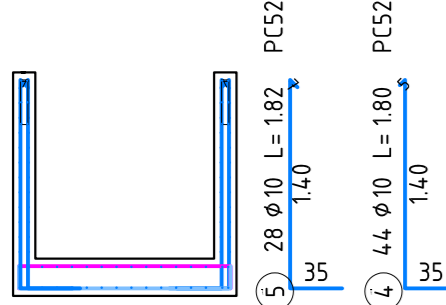
Plan armare placa acoperire
Scala 1:20



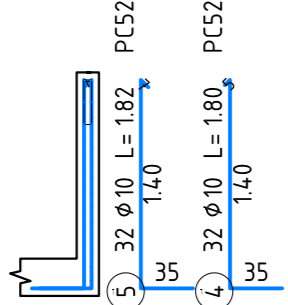
Detaliu trepte (3buc)
Scala 1:20



Sectioni 1-1
Scala 1:50

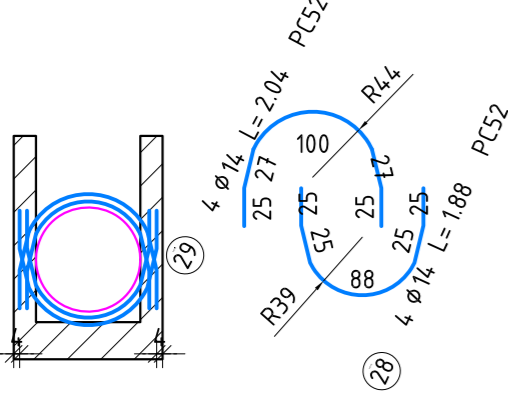


Sectioni 2-2
Scala 1:50



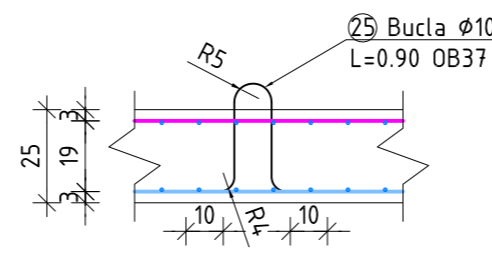
Nota:
Barele verticale si cele orizontale vor fi oprite in dreptul golurilor si se vor fasona cu ciocuri la 90°.

Armare bordaj gol $\phi 70$ cm (2buc)
Scala 1:50

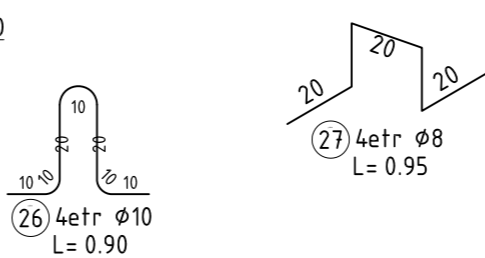


Marca	Ø	Nr. buc.	L (m)	PC52							
				10	8	10	12	14	20		
1	10	64	1.55	-	-	-	-	-	-		
2	10	44	1.67	-	-	-	73.48	-	-		
3	8	7	0.86	-	6.02	-	-	-	-		
4	10	76	1.80	-	-	-	136.8	-	-		
5	10	60	1.82	-	-	-	109.2	-	-		
6	8	48	1.58	-	75.84	-	-	-	-		
7	8	48	1.50	-	72	-	-	-	-		
8	8	96	0.55	-	52.8	-	-	-	-		
9	8	48	0.75	-	36	-	-	-	-		
10	8	48	0.75	-	36	-	-	-	-		
11	8	96	0.65	-	62.4	-	-	-	-		
12	8	48	1.15	-	55.2	-	-	-	-		
13	8	16	0.12	-	1.92	-	-	-	-		
14	20	3	1.00	-	-	-	-	-	3		
15	12	6	1.58	-	-	-	-	-	9.48		
16	12	6	1.50	-	-	-	-	-	9		
17	8	28	0.85	-	23.8	-	-	-	-		
18	8	32	0.55	-	17.6	-	-	-	-		
19	8	24	0.68	-	16.32	-	-	-	-		
20	8	38	1.55	-	58.9	-	-	-	-		
21	8	24	0.50	-	12	-	-	-	-		
22	8	24	0.65	-	15.6	-	-	-	-		
23	12	4	2.24	-	-	-	-	-	8.96		
24	12	4	2.54	-	-	-	-	-	10.16		
25	8	36	0.70	-	25.2	-	-	-	-		
26	10	4	0.90	3.6	-	-	-	-	-		
27	8	4	0.94	-	3.76	-	-	-	-		
28	14	8	1.88	-	-	-	-	-	15.04		
29	14	8	2.04	-	-	-	-	-	16.32		
Lungimi pe diametre (m)				3.6	571.36	418.68	37.6	31.36	3		
Greutate pe 1m (kg)				0.617	0.395	0.617	0.888	1.208	2.466		
Greutate pe diametre (kg)				5	240	275	40	45	10		
Total (kg)					OB37=5	PC52=610					

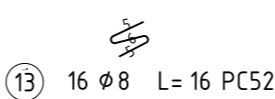
DETALIU URECHI DE AGATARE
SCARA 1:20



Detaliu capra placa
Scala 1:20



Detaliu agrafa
Scala 1:10



ELEMENT	STANDARD	CARACTERISTICI OTEL				CLASA DE EXPUNERE	CONTINUTUL DE CLORURI	RAPORTUL MAX. AC/AGREGAT	TIPUL DE CEMENT	CANTITATEA DE CEMENT	DIMENSIONEA AGREGATELOR	
		REZ. TENSIE (N/mm²)	REZ. ELASTICITATE (N/mm²)	ALUMINIU (%)	ALUMINIU/CLORURI (N/mm²)							ALUMINIU/AGREGAT (%)
ARMATURA												
OB37	STAS 438-198	255	Ø12mm	300	2.2%	15.0%				28%		
PC52	STAS 438-198	395	Ø14mm	510	1.5%	10.0%				20%		
PC50	STAS 438-198	425	Ø12mm	400	1.0%	5.0%				16%		
STAB	SR 438-198	440	Ø14	500	0.2%	Ø14	0.2%	Ø14	0.2%	Ø14	0.2%	
	SR 438-198	440	Ø12	500	0.2%	Ø12	0.2%	Ø12	0.2%	Ø12	0.2%	
	SR 438-198	390	Ø10	400	0.4%	Ø10	0.4%	Ø10	0.4%	Ø10	0.4%	
SPPB	SR 438-198	480	Ø10	500	0.5%	Ø10	0.5%	Ø10	0.5%	Ø10	0.5%	
	SR 438-198	480	Ø12	500	0.5%	Ø12	0.5%	Ø12	0.5%	Ø12	0.5%	
	SR 438-198	480	Ø14	500	0.5%	Ø14	0.5%	Ø14	0.5%	Ø14	0.5%	
TP ELEMENT	CLASA BETON	CLASA DE EXPUNERE	CONTINUTUL DE CLORURI	RAPORTUL MAX. AC/AGREGAT	TIPUL DE CEMENT	CANTITATEA DE CEMENT	DIMENSIONEA AGREGATELOR					
TOATE ELEMENTELE/AL. ELEMENTS	C25/30	XD2	XA1	Cl. 2	0.6	CEMBA-0.32.5A	280	16				

PROIECTANT GENERAL / GENERAL DESIGNER: SC DC TS STRUCTURI SRL		BENEFICIAR / BENEFICIARY: dumar CONSTRUCT SRL Nr. Reg. Com. J44/28737/1994, R. 6954682 Str. Izv. Pufului, nr. 11, Bl. AT1, Ap. 109, sector 4, Bucuresti, Tel./Fax: +40 404 64 74		PROIECT NR.: PROJECT NO.: 2709/2016
DC TS Structuri DC TS Structuri SRL Nr. Reg. Com. J44/35717/01.2011, R. 2795206 Strada Duzilor nr. 5 Sector 2 Bucuresti Romania Tel/Fax: +40 211 258 833 Mobil: +40 721 398 437 F: +40 211 258 833 www.dc-ts.ro		DENUMIRE PROIECT / PROJECT NAME: CAMIN VIZITARE DN1200		FAZA / PHASE: DE
SPECIFICATIE / SPECIFICATION:	NUME / NAME:	SEMNAȚURĂ / SIGNATURE:	SCARĂ / SCALE:	PLANSĂ NR. / PLAN NO.:
SEF PROIECT / PRJ. MANAGER:	ing. ANA-MARIA POPA		1:50/1:20	Rp02
PROIECTANT / DESIGNER:	ing. STEFAN MADALIN BLIDEA		DATA PREDARE / DATE:	REVISIA NR. / REVISION NO.:
DESENAT / DRAWN:	ing. STEFAN MADALIN BLIDEA		02/2021	01
VERIFICAT / CHECKED:	ing. ALIN APOSTOLESCU			